

Doe House, Main Street, Dumbleton, Evesham

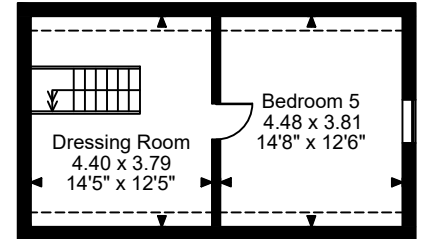
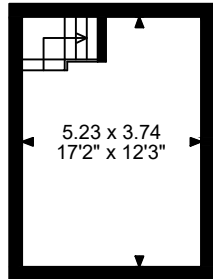
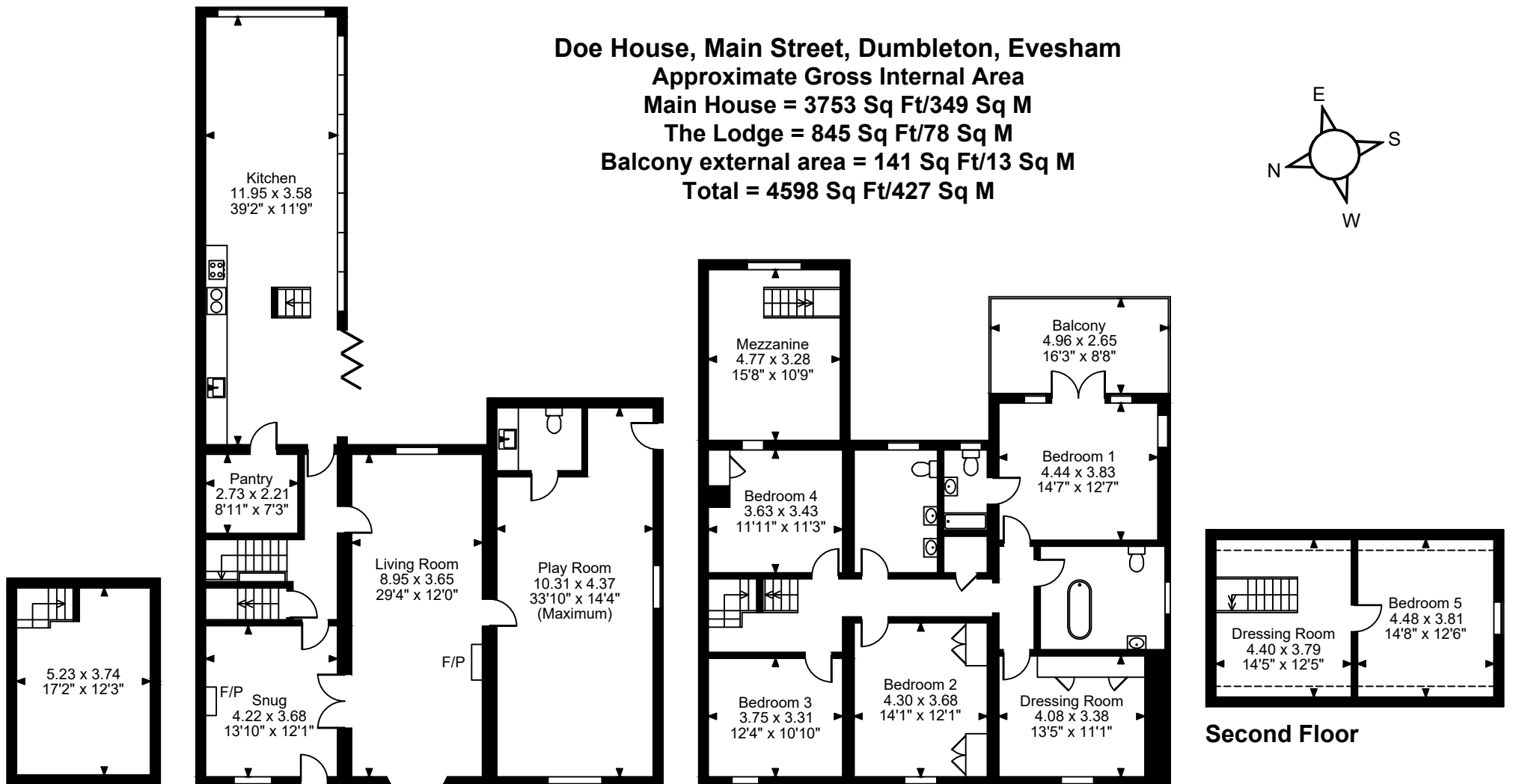
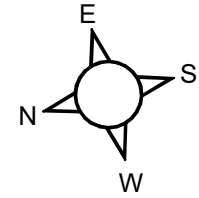
Approximate Gross Internal Area

Main House = 3753 Sq Ft/349 Sq M

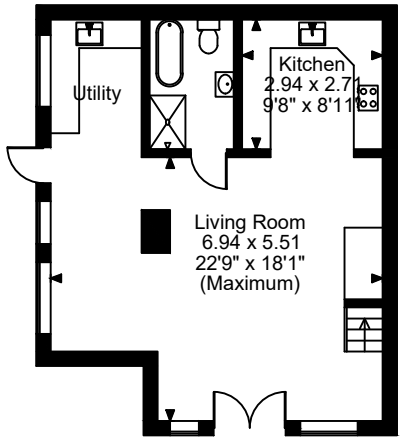
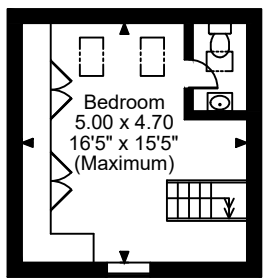
The Lodge = 845 Sq Ft/78 Sq M

Balcony external area = 141 Sq Ft/13 Sq M

Total = 4598 Sq Ft/427 Sq M



Cellar **Ground Floor** **First Floor** **Second Floor**



The Lodge First Floor **The Lodge Ground Floor**

FOR ILLUSTRATIVE PURPOSES ONLY - NOT TO SCALE

The position & size of doors, windows, appliances and other features are approximate only.

☐☐☐ Denotes restricted head height

© ehouse. Unauthorised reproduction prohibited. Drawing ref. dig/8633476/SS